



2023 PARK CITY AREA SHOWCASE *of* HOMES

EXPLORE PARK CITY'S MOST PRESTIGIOUS HOMES



2022 People's Choice Winner
Killowen Construction
killowenco.com



AUGUST 25-27 AND SEPTEMBER 1-4

FRIDAYS: 2PM-8PM • SATURDAYS, SUNDAYS AND LABOR DAY MONDAY: 10AM-6PM

PCShowcaseOfHomes.com

SPONSORED BY:





Photography: Doug Burke

Voted Park City's Best General Contractor.
PERSONABLE | ACCOUNTABLE | EXPERIENCED
New Construction | Design-Build | Commercial | Remodel

bdogbuilders.com | 435-649-5252 | email us at office@bdogbuilders.com

LISTEN TO HEATHER OSMOND HOST THE  REAL ESTATE SHOW EVERY SATURDAY FROM 11AM-12PM



151 E. STATE STREET, LEHI • 801-766-6448
1660 N. STATE STREET, OREM • 801-225-2555

OSMONDDESIGNS.COM



BEST OF UTAH VALLEY
WINNER
FURNITURE
HOME DECOR
INTERIOR DESIGN



2023 BEST OF HOUZZ
WINNER
INTERIOR DESIGN
CUSTOMER SERVICE



2023 BEST OF STATE
WINNER
INTERIOR DESIGN
HOME DECOR
FURNITURE



Featured In: **Forbes**          



YOUR LIFE CHANGES, YOUR HOME SHOULD CHANGE WITH IT.

We understand that building your dream home is not one-size-fits-all. That is why at Zions Bank we offer a variety of home construction loans* to help you achieve the results as unique as you are.

**Best of State
Utah 2022**



Mortgage Banking

Cory J. Holmes

NMLS #494844

cory.holmes@zionsbancorp.com

435-709-3264

Rob Jibson

NMLS #532164

rob.jibson@zionsbank.com

435-658-5311


Kammra Montgomery

NMLS#293439

kammra.montgomery@zionsbank.com

435-671-8571

ZIONS BANK®

*Subject to credit approval. Terms and conditions apply. Equal Housing Lender  Zions Bank NMLS #467014.
A division of Zions Bancorporation, N.A. Member FDIC

elume

DISTINCTIVE LIGHTING

ROCK CRYSTAL MODERN BRANCH BY

HAMMERTON™

HANDCRAFTED IN UTAH
IN ARTISAN BLOWN GLASS
WITH INTEGRATED LED

Kimberly Parker Design | Lindsay Salazar Photography



24th Annual
ARTS
AWARDS
WINNER



26th Annual
ARTS
AWARDS
WINNER



29th Annual
ARTS
AWARDS
WINNER

Park City, Utah - Showroom
3156 Quarry Road Unit A
Open M - F 10 - 5 and by Appointment
(435) 647-2997 | www.elumepc.com

Bring Beauty Like No Other

Quartz, one of the most durable surfacing materials available, brings a beauty like no other to countertops, walls and wet-area surrounds. Visit one of our five Utah showrooms to experience this and our other quartz and natural stone offerings as well as our gorgeous porcelain floor and wall tiles firsthand.

Featured
Crema Café Polished | Quartz Countertop and Backsplash

SLC Tile
3711 South 300 West
Salt Lake City, UT 84115
801.262.1717

SLC Slab Gallery
2885 South 300 West
Salt Lake City, UT 84115
801.433.1717

American Fork
938 South 500 East
American Fork, UT 84003
801.426.8686

Ogden
3004 South 1900 West
Ogden, UT 84401
801.436.1717

St. George
440 West 200 North
St. George, UT 84770
435.628.3700

Crossville
Studios

CONTEMPO
Tile - Stone - Slab

HELM

Furnishing Park City's Finest Homes

Park City is a place where luxury, comfort, and leisure come together—and your Park City home should reflect that same balance. With one of the state's largest collections of high-end furniture, Helm can help you achieve the perfect combination of modern luxury and mountain living in a way that speaks to your personal vision. Whether you're a homeowner or a professional designer, we can help you select, ship, store, and place the perfect pieces from the world's leading manufacturers, including Baker, Century, Bernhardt, Hickory Chair, Lexington, Massoud, and more.

STOP BY OUR 30,000 SQUARE-FOOT SHOWROOM
OR CALL TO SCHEDULE A PRIVATE WALKTHROUGH.



5253 S STATE ST. MURRAY, UT 84107

(801) 263-1292 | HELMHOME.COM



Creative Granite & Design is where Mother Earth's masterpieces and skilled craftsmanship meet to create an exquisite countertop, that will reflect and define your individual style.

REQUEST A QUOTE TODAY!
creativegranite.com | 801-886-0204

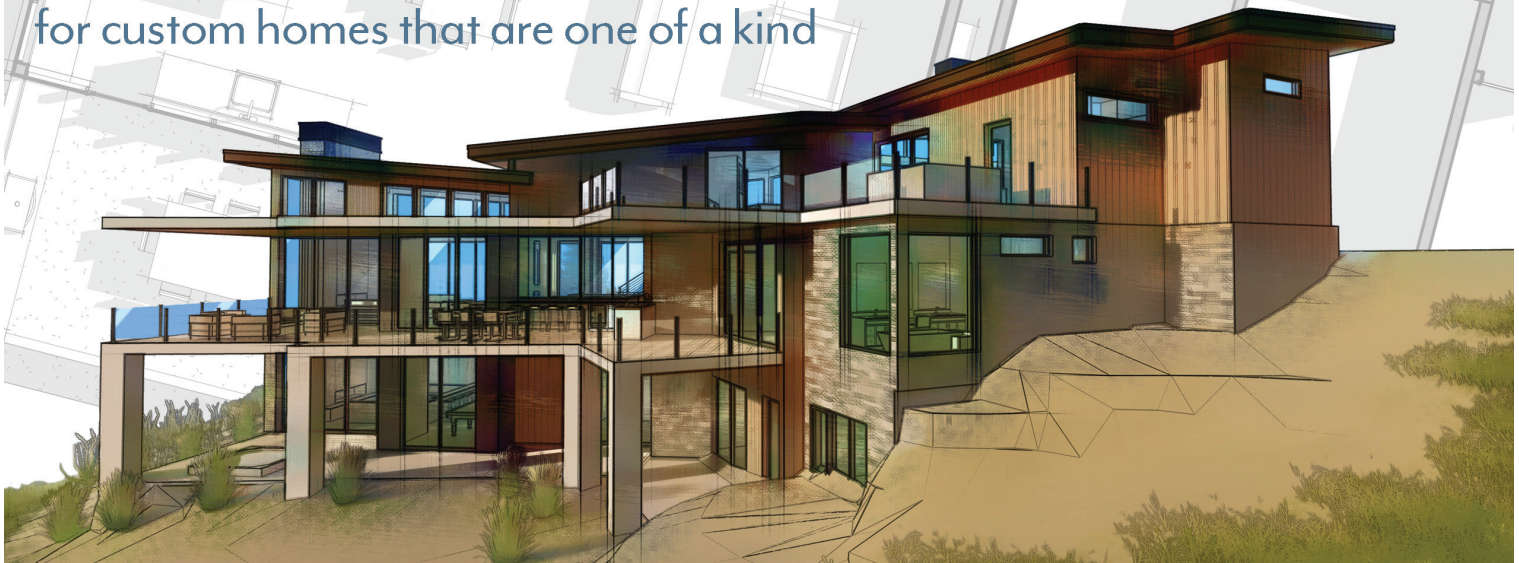


VAN SICKLE

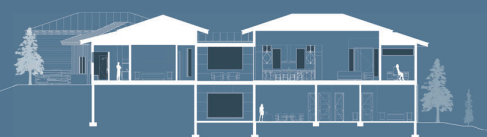
DESIGN & DRAFTING



Premier, High-End Design
for custom homes that are one of a kind



786 Division Street #102
Park City, Utah 84098
VanSickleDesignandDrafting.com
Bill@VanSickleDesigned.com
801.694.9683





**SHOWERS • MIRRORS •
DECORATIVE HARDWARE
CUSTOM FRAMING • STORE
FRONT • GLASS RAIL • & MORE**

Tannerglass.com

PARK CITY, UTAH
4490 Forestdale Dr.
M-F, 9am - 5pm
435.565.6115

MIDVALE, UTAH
7139 South 700 West
M-F, 8am - 5pm
801.563.3343

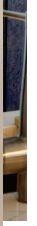
TANNER
GLASS & HARDWARE



PARK CITY BLIND
AND DESIGN

BLINDS | SHADES | DRAPES | SHUTTERS | UPHOLSTERY | MOTORIZATION

435-649-9665
parkcityblind.com





The Perfect Upgrade

During these unsettling times, the one world you can control is your home. So, invest in it and create a fresh, new look where you live with the best custom window treatments from Sunburst.

While you're making other home improvements, add Sunburst Shutters & Window Fashions for the perfect finishing touch. We've been transforming homes beautifully for over 45 years.

We don't just do it right... we do it better.™

Sunburst
SHUTTERS &
Window Fashions

801-756-0065

SunburstShuttersUtah.com | 71 South 1380 West, Suite 2, Lindon



CREATIONS WEST

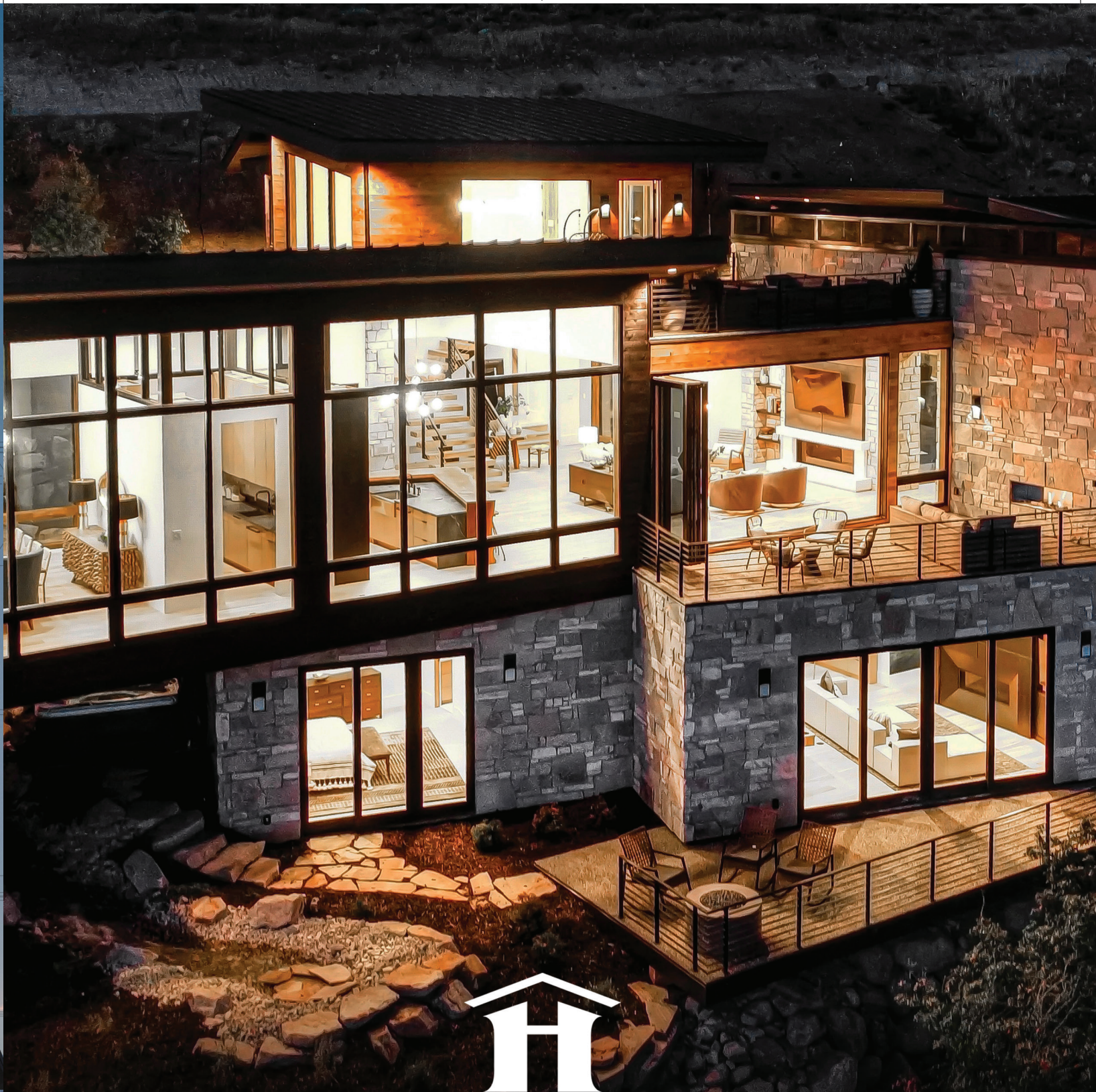
Even The Best Dreams Need A Plan!

Custom & Stock House Plans
2D & 3D Designs
Addition & Remodel Plans
creationswest.com
801-525-6700



Scan Me





HABITATIONS

RESIDENTIAL DESIGN GROUP

CUSTOM HOME DESIGN • SITE CONSULTING

(801) 476-1860
HABITATIONSRDG.COM



Twelve time "Best of  winner!"



INDEPENDENT & FAMILY-OWNED WITH **30 YEARS** OF
 EXPERIENCE UTAH'S PREMIER CLOSET & GARAGE DESIGNERS
theclosetbutler.com | 1272 W Sportsplex Dr. Kaysville, UT | 801.728.0747

LIVE YOUR *Style*



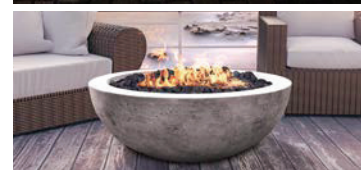
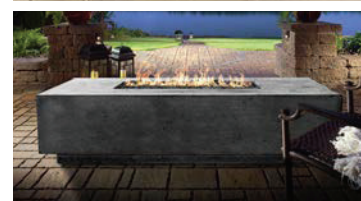
Furniture, Accessories and Interior Design
ivyinteriorsutah.com | 801.486.2257 | 3174 S. Highland Dr. Salt Lake City, UT 84106



Let Alpine Fireplaces **FIRE UP** Your Indoor & Outdoor Living Spaces



Fireplaces &
Fire Features for your new
home & remodeling
projects!



Visit our showrooms to see
our exciting options for
your Indoor and Outdoor
Living Spaces and see full
burning displays!

BOISE

111 South Stratford Drive
208-246-8858

SUGARHOUSE

2236 South 1150 East
801-487-4446

SANDY

9192 South 300 West
801-566-0666

LEHI

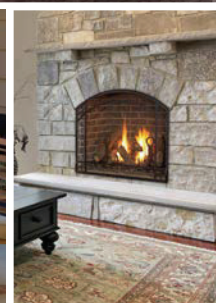
782 West State Street
801-768-8411

OREM

1417 South State Street
801-225-4015

ST. GEORGE

393 East Riverside Drive
435-628-9133



www.alpinefireplaces.com

GET A FREE QUOTE

800-550-0952

Wood | Gas | Pellet | Electric | Gas Logs | Outdoor Fire Pits

South Jordan

For Information Please Contact

Brian Preece, Director of City Commerce

801-254-3742 • bpreece@sjc.utah.gov • www.sjc.utah.gov

"Best Place to Live" — Money Magazine



Harvest Village



Shopping — Costco, Wal-Mart, Sportsman's Warehouse, VASA, Restaurants, Financial, Medical

Mulligans Golf & Games



Driving Range, Golf Course, Mini-Golf, Batting Cages

FrontRunner TOD/SoJo Station

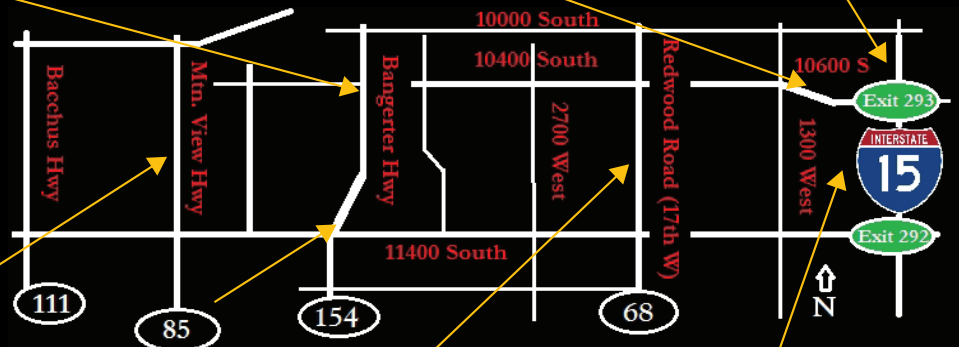


High Speed Commuter Rail/TOD — Class A Office, Apartments, Service Retail, Full Service Hotels (Existing & Under Construction)

Daybreak



Residential, Senior Living, Oquirrh Lake, Retail — Soda Row, Trail Crossing Shopping Center



20 Minutes from Downtown Salt Lake City and the Salt Lake International Airport

The District



Lifestyle Center — Megaplex 20 Theatre, Restaurants, Shopping, Residential

Redwood Road/SJ Parkway



Shopping — Towne Center, Restaurants, Residential, Library, City Offices, Farmers Market on Saturdays: 8am – 2pm

RiverPark Corporate Center



Class A Office Space — Restaurants, Fitness Center, Jordan River Trail Access

Increase your comfort. And your resale value.

**HOMEOWNERS RATE PELLA WINDOWS AND DOORS #1 FOR
HIGHEST CRAFTSMANSHIP.*
FIND YOURS AT PELLA WINDOWS AND DOORS OF UTAH.**

**VISIT YOUR LOCAL PELLA SHOWROOM:
PARK CITY | 3126 QUARRY RD, UNIT 4-C
CALL: 801-566-4131**

**SANDY | 9270 S 500 W, SUITE A
CALL: 801-568-0114**



*Study of homeowner perceptions of leading national brands. Study commissioned by Pella, 2021. ©2023 Pella Corporation.



**PERFECTED
BY PELLA.**



UTAH'S PREMIER SOLAR AND ELECTRIC CONTRACTOR

We are a team of licensed electricians
and NABCEP certified solar professionals
based in Park City for over 13 years.

(801) 262-5140 | alpenglowenergy.com



2023 PARK CITY AREA
SHOWCASE of HOMES

AUGUST 25-27 **AND**
SEPTEMBER 1-4

Both Fridays: 2 p.m. to 8 p.m.
Both Saturdays, Sundays, and
Labor Day Monday: 10 a.m. to 6 p.m.
(see pullout map)

NOTE: Park City Area Home Builders Association
takes no responsibility for any Showcase of Homes
participants that are not open for public viewing during
Showcase of Homes dates. All square footages listed
are approximate.



Guide to the Homes24

Ticket Info28

Showcase of Homes App.....28

Showcase of Homes Sponsors.....32

Welcome to the 2023 Showcase of Homes.....36

PCAHBA Board of Directors/Officers 40

Frequently Asked Questions 44

Showcase of Homes 46

Cover Home by Killowen Construction / killowenco.com

Home Renderings drawn by Scott A. Roberts Architectural Illustrator, Inc.

Showcase Home Photography by Utah Valley Videos & Snap Sale
Headshots by Impact Photography

Park City Area Home Builders Association
P.O Box 980850
Park City, UT 84098
PHONE 435-645-9363
info@pcahba.com • www.pcahba.com

Published in parntership with:

 **DeseretNews.**
55 N. 300 W.
Salt Lake City, UT 84101
Office: 801-204-6300
www.deseret.com

PROJECT TEAM
Megan Donio, Publications Manager
Serina Nielson, Senior Graphic Designer
Allen Muy, Graphic Designer

ADVERTISING
Sally Steed, Director of Advertising

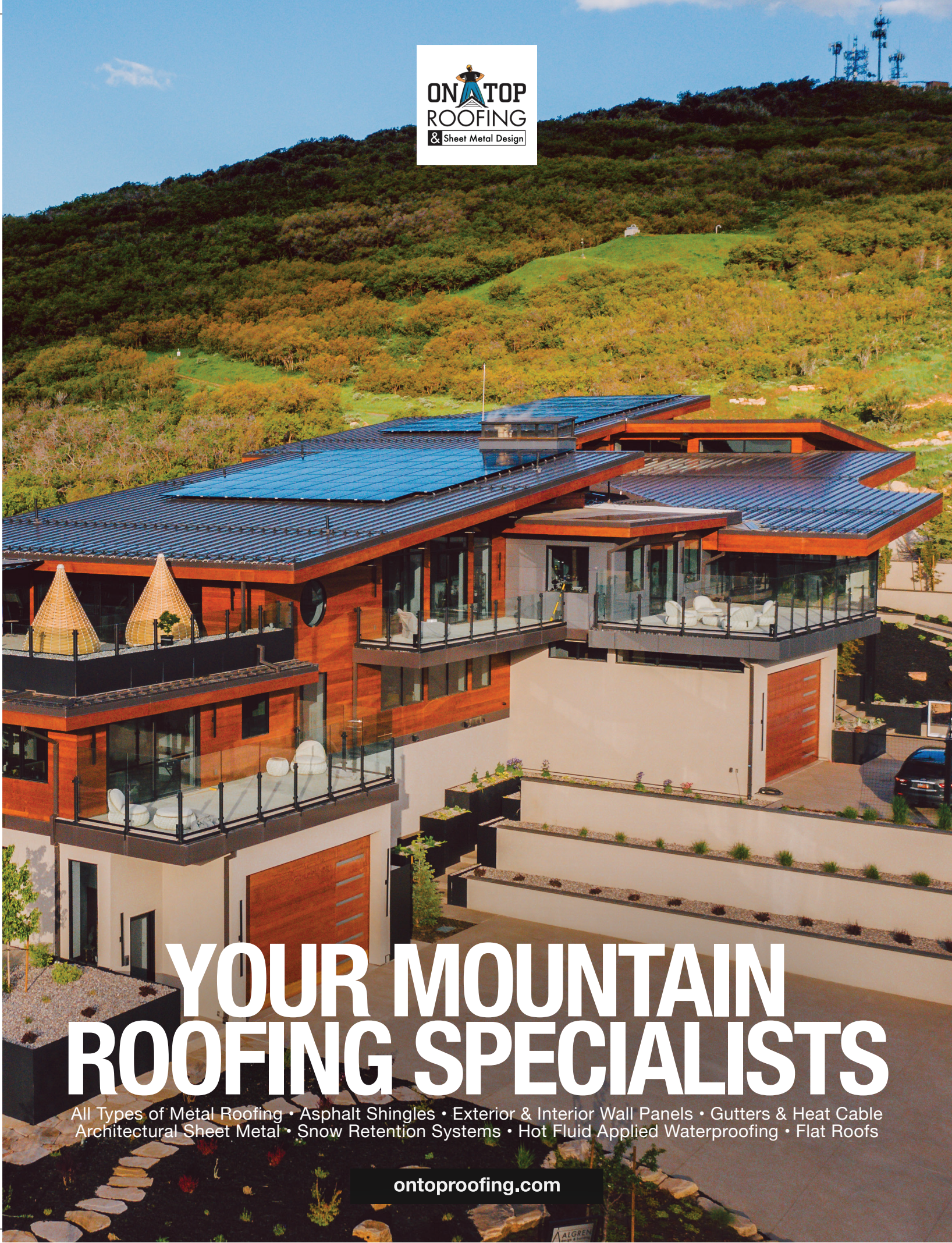
ACCOUNT MANAGERS
Pam Barnett
Suzanne Benitez
Samantha Campbell



Quality for Life



WWW.LANDMARKSWEST.COM



YOUR MOUNTAIN ROOFING SPECIALISTS

All Types of Metal Roofing • Asphalt Shingles • Exterior & Interior Wall Panels • Gutters & Heat Cable
Architectural Sheet Metal • Snow Retention Systems • Hot Fluid Applied Waterproofing • Flat Roofs

ontoproofing.com



SILVER MOUNTAIN INTERIORS



Silver Mountain Interiors is a Full Service Luxury Interiors Design Firm located in Park City Utah.

The SMI Team specializes in new construction, remodeling, furnishings, and everything necessary to design and outfit homes in Resort Communities.

435.655.5030

info@silvermountaininteriors.com

www.silvermountaininteriors.com

1670 Bonanza Drive, Ste. 201, Park City, UT 84060

ONE DAY INSTALLATION YOUR FEET WILL LOVE!

GARAGE FLOORS, BASEMENTS, PATIOS, COMMERCIAL & MORE!



Scan the QR Code to learn more and
schedule your **FREE ESTIMATE!**

Additional Discounts for Military, Police & Fire



BarefootConcreteCoatings.com 385-485-6113

GUIDE TO HOMES



1

Page #46

BYA INTERIOR STYLIST
55 Matterhorn Drive
Summit Park, Park City

REMODEL



2

Page #48

ALPINE DESIGN BUILD
3041 Oak Rim Lane
Park Meadows, Park City



3

Page #50

IVORY HOMES
2710 Ledger Way
Park City Heights, Park City



4

Page #52

MODERN MOUNTAIN BUILDERS
2737 E. Bitter Brush Drive
Promontory, Park City



5

Page #54

EZRA LEE DESIGN+BUILD
7486 Bugle Trail
Promontory, Park City



6

Page #56

BIG CANYON HOMES
3902 Aspen Camp Loop
Promontory, Park City



7

Page #58

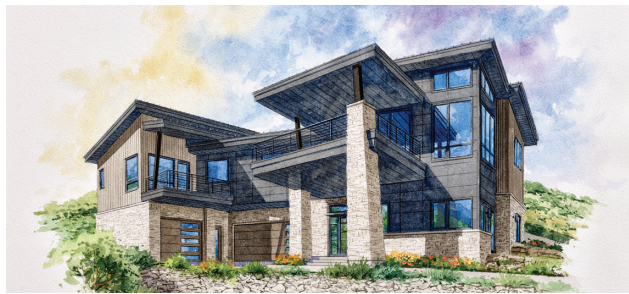
MCCORMICK CONSTRUCTION COMPANY
3731 E Rockport Ridge Road
Promontory, Park City



8

Page #60

HAMLET HOMES
1983 W. Dotterel Circle
Sage Hen, Park City



9

Page #62

SCHARPF CONSTRUCTION
11221 N. Orion Drive
SkyRidge Estates, Park City



10

Page #64

HARWOOD HOMES
9406 N. Uinta Drive
Tuhaye, Kamas



11

Page #66

BLUE RIDGE BUILDERS
9014 N. Uinta Drive
Tuhaye, Kamas



12

Page #68

H2 HOMES
9809 N. Ridgeway Circle
Tuhaye, Kamas



13

Page #70

SUPERIOR CUSTOM HOMES
485 N. Waters Edge Road
Whitaker Farm, Midway



14

Page #72

PUREHAVEN HOMES
613 S. Fox Den Road
Midway Crest, Midway



15

Page #74

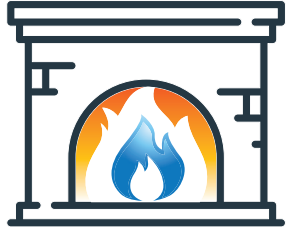
CHATWIN HOMES
360 Old Stone Road
The Crossings at Lake Creek, Heber City



16

Page #76

THE HOUSLEY GROUP
3300 Lindsay Spring Circle
The Crossings at Lake Creek, Heber City



COMFORT SOLUTIONS

FIREPLACE

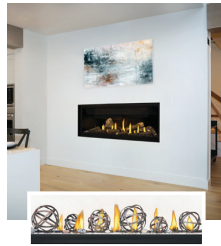
Remodel and New Construction



Luxuria LVX74
Birch modern living room



Alluravision NEFL50CH
Deep Life Str



Vector LV38 livingroom DLE REK MKE
white surround Napoleon fireplaces



FIREPLACES | HEATING

AIR CONDITIONING



Call Today or Visit
One of Our Showrooms:

Sandy: 801-754-6663 8451 S. Sandy Pkwy.

West Haven: 801-436-2395 1723 S. 1900 W.



Get Design Ideas at
FIREPLACESUTAH.com

RETREAT



801-930-9499
WALKERHOMEDESIGN.COM

WALKER
HOME DESIGN

YOUR WORLD CLASS HOUSE PLAN

TICKET INFO

TICKETS AVAILABLE AT
PCSHOWCASEOFHOMES.COM

\$22 (all ages)



See all homes in-person and sit back and tour them virtually from the comfort of your own home, these magnificent homes will not disappoint!

- Tickets will NOT be sold at any of the homes during the Showcase.
- Tickets are valid to tour all homes in-person and also through the Virtual Showcase located at PCShowcaseOfHomes.com.
- Each ticket is good for all dates and times during the Showcase. Each ticket is good for one visit per home plus re-entry to two homes of your choice
- Enter your virtual passcode found directly on your Showcase of Homes ticket.

**Download the Showcase app
“Park City Showcase.”**



TRACK HOMES VISITED



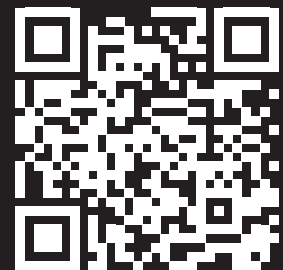
HOME & BUILDER INFO



HBA MEMBERSHIP
DIRECTORY



TURN-BY-TURN
DIRECTIONS TO
EVERY HOUSE!



Minky Couture®

BEST. BLANKET. EVER.

Visit us online or in-store and enjoy

50% OFF

your entire purchase

USE CODE: PCSHOWCASE50

Code may not be combined with any other offer. Some exclusions apply. Offer expires November 30, 2023.





McEwan
CUSTOM HOMES

THE DIFFERENCE IS IN THE DETAILS

Five time Utah Valley Parade of Homes winner McEwan Custom Homes specializes in building high end luxury homes. We are committed to fostering strong, lasting relationships with our clients that result in an exceptional building experience.

mcewancustomhomes.com

SPONSORS



For 70 years, Amsco Windows has been delivering excellence and is the perfect building partner. With a state-of-the-art 535,000-square-foot manufacturing facility, 4-500-unit-per-day estimated production capacity and a staff of seasoned window experts, Amsco is capable of providing you with the right product for projects of any size. Visit amscowindows.com or the showroom at 1880 S. 1045 W., Salt Lake City.



Dominion Energy provides safe, reliable, affordable and increasingly sustainable natural gas service to almost 1.2 million customers in Utah, Wyoming and Idaho. Since 2007, Dominion Energy's ThermWise program has helped homes, businesses and builders use energy more wisely. The program offers Home Energy Plans as well as rebates for energy-efficient appliances and weatherization improvements. Remember: "If you conserve, you can save!"



Kip Slaugh and Associates, Inc. is a locally based, family run concrete construction firm. We have been doing work in the intermountain area for over 30 years. Our office is located in the Salt Lake Valley, and our construction staging yard is in Kamas. For several years, we have been a predominant contractor throughout Park City, Wasatch and Summit County areas but we also do work in Salt Lake Valley as well as other areas in Utah and throughout many of the intermountain states. We are a full-service concrete contractor with a complete inventory of Symons forms. We are able to do all types of footings, foundations, site work, and flat work, including colored and stamped pattern concrete as well as different finishes. We are also able to do stained colorings and sealers. Contact Kip Slaugh at (801) 573-3821 for more information or an estimate on your next project.



Minky Couture was established in 2009. Owner, Sandi Sumner Hendry, started by giving fun, unique, and functional gifts to friends and family members. The blankets she gave were an instant hit. Universally loved and used daily, she decided to do a little more research on these soft, cuddly blankets. In doing so, she discovered the wonderful world of minky fabric. Minky Couture is now a household name in the state of Utah with 6 retail store and a wonderful e-commerce presence.



MLD has five showrooms that offer the latest appliances, plumbing, and hardware for your home or business. Our showrooms are live and installed for your testing, so you can try before you buy! Through an out-of-the-ordinary showroom experience, extraordinary adventures, and beyond ordinary services, we invite you to our showroom to meet with our team and discover why working with us is easier and more enjoyable.

Question the ordinary at MLD • UTAH | IDAHO | WYOMING • WWW.MLD.COM



At Peppertree we pride ourselves on our service from start to finish. Our designers take your thoughts, ideas and dreams and bring them to reality. Each piece is built to order and designed specifically for each client. Contact us about your project today and let us show you our commitment to delivering an unforgettable experience. Founded in 1986, Peppertree Kitchen & Bath has become one of the best-known cabinet manufacturers in Utah.

Visit one of our Showrooms or call to talk to one of our Designers.

West Jordan, Utah 7940 S. 1300 W. 801-565-1654

Jackson, Wyoming 485 W. Broadway 801-565-1654



Zions Bank Home Mortgage & Construction Group offers a wide variety of lending products. The phrase "We haven't forgotten who keeps us in business", is evident in our unique portfolio products that have been created to meet our client's unique and individual needs. In addition to our flagship, 1xClose Construction loan program, Zions Bank Mortgage also offers condotel financing, long-term interest locks (up to nine months for new construction purchase loans), no maximum loan amounts, competitive interest rates, relationship pricing, asset dissipation programs, and cash-flow and tax analysis for the self-employed & high net-worth clients. There's a reason we've been named Best in State for two of the last three years. It's time to give experience a try!

For questions or inquiries contact:

Rob Jibson @ (435) 658-5311 | NMLS# 532164

Cory Holmes @ (435) 671-3580 | NMLS# 494844

Kammra Montgomery @ (435) 671-8571 | NMLS# 293439

ADDITIONAL SPONSORS:



MID

M L D . C O M

Appliances Plumbing Hardware





FROM DESIGN CONCEPT TO COMPLETION,



KELLERT GREENLAW



HAYDEN GREENLAW

GREENLAWCONSTRUCTION.COM



WE BUILD HOMES THAT STAND OUT.



GREENLAW CONSTRUCTION

CUSTOM HOMES | DESIGN | BUILD

801.979.3645 | info@greenlawconstruction.com



WELCOME

Welcome to the 2023 Park City Area Showcase of Homes

Let's start with something different than "On behalf of the Park City Area Home Builders Association (PCAHA); we would like to welcome you to the 2023 Park City Area Showcase of Homes," shall we!? As many of you could tell by picking up this magazine, you know what we are in for. So, what is the point in saying the same old thing year after year?

Well, from what I can gather, it's to ensure you, the consumer, know the facts of how many homes you can tour, where they are, what the homebuilding industry is looking like, a brief moment to thank our sponsors (YOU ARE AMAZING!) and finally to thank you, yeah you, for taking the time out of your busy lives to support our community. Now let's get down to the nitty-gritty.

This year we have 16 spectacular homes from your PCAHBA members to feast your eyes on, get inspiration from, or buy if you're lucky. A few of these 16 homes squeaked in at the very last minute, barely making the deadline to be in the show, which gave the association some anxiety (with love, you know who you are). Many of these homes were not completed until days before the big reveal. One or two of these homes were done months ago; bless their hearts by sticking to their timelines or things surely went their way (which doesn't often happen in this industry).

From homes 1 to 16, you will see houses in various areas and communities from Summit County to Wasatch, Tuhaye to Promontory, and everything in between? Or around? I don't know how to encompass everything, but you get the gist. The Park City Area Showcase of Homes covers a vast area whilst showing off tons of different types of architecture and bespoke designs. From contemporary mountain retreats to rustic lodges (which there are none of) and elegant ski chalets, the styles of these custom homes are as diverse as the people who commission them.

However, in all seriousness, all of these homes took a lot of work. It is easy to forget that when you see the finished product. They are more than just a highlight on your Instagram feed, a liked post on Facebook, or a TikTok. Hard-working men and women created and built these homes. Few stand in the foreground and get a lot of thanks, which is deserved. Although the many, and I mean many (excavators, framers, steel fabricators, plumbers, electricians, HVAC technicians, AV specialists, granite fabricators, title setters, stone masons, etc., to name a few) made these homes a reality from behind the scenes.

All of these people from the top down and bottom up are what the Park City Area Home Builders Association is all about. This community represents the skill and passion of the homebuilding industry at the local, state, and national levels. That being said, outside of the day-to-day, our members voluntarily spend time working on community service projects like Shop with a Cop during the Holidays, attending county/city council meetings about homebuilding-related changes, encouraging youths/young adults to consider a career in this industry by providing scholarships, and so much more like a lot more.

Homebuilding is one of the most challenging jobs out there. We might not be saving lives or writing code for the next new app, but this industry has been around since the "New Stone Age" (if you don't know what this is, it's old) and has endured the tests of time while advancing along the way and is here to stay. The custom residential industry in Park City and its surrounding areas has thrived in recent years, and it has even been hard to get a building permit at times. Despite that, our industry has faced challenges, including rising construction costs, lack thereof or limited supply of materials, and shortages of skilled laborers.

Nonetheless, our local economy is "thriving," the population of high-net-worth individuals is growing, and the enduring appeal as a destination for year-round outdoor activities, the Park City area, remains a hot spot for custom residential construction. As long as the demand for exclusive, tailor-made homes persists, the industry is likely to continue flourishing, leaving a mark on the architectural landscape of this beautiful region.

While the ultimate goal is to showcase some bad A#\$ homes, we hope you might patronize someone from our community, whether it is to build your dream home here in any of the exquisite neighborhoods or a simple remodel. You may be here to get ideas and inspiration for your future project(s). Or you might be a lookie-loo. Regardless, we are happy you decided to spend your day with us.

Remember to VOTE for your favorite home after your Showcase visit so we can award the most coveted People's Choice Award to the home you most enjoyed! Voting can take place at www.PCShowcaseOfHomes.com.

Finally, this is only possible with our amazing sponsors. We want to thank Amsco Windows, Dominion Energy/Thermwise.com, Kip Slaugh & Associates, MLD, Minky Couture, Peppertree Kitchen & Bath, Zions Bank, Altitude Control Technology, Ghigau Construction, Honey Bucket, Maserati of Salt Lake & MojiLife for providing their invaluable support to the Showcase of Homes and the Park City Area Home Builders Association throughout the rest of the year.



PARKER LOOMIS | LOOMIS CONSTRUCTION
First VP of the Park City Area Home Builders Association
and Chairman of the Showcase of Homes Committee



**PARK CITY AREA
HOME BUILDERS ASSOCIATION**

Thank you to our generous 2023 sponsors for their continuous support

MONTHLY MEMBERSHIP SOCIALS

Duerden's Appliance & Mattress
Hamlet Homes
Magleby Construction
Roth Living
San Francisco Design
ShadeCo
Sierra Forest Products
Silver Mountain Interiors
Tanner Glass & Hardware
The Stone Collection
Zions Bank

NEW MEMBER BREAKFAST

Anvil Appliances / Anvil Cabinet & Mill
Roth Living

GOLF TOURNAMENT

Title Sponsor: Builders FirstSource
Drink Cart Sponsor: Kitchen & Bath
Distinctions by Southwest Plumbing
Hole Sponsors:
A+ Elevators & Lifts
Audio Video Systems
Bedrosians Tile & Stone
Build Magazine
CapitalOne
Halotherapy Solutions
Hamlet Homes
Hearth & Home Distributors of Utah
Honey Bucket
Kip Slaugh & Associates
Laticrete
NERVE Park City
Sea to Ski Property Management
ShadeCo
SOLUS Living
Tanner Glass & Hardware
TruGolf
Zions Bank



BLACK GRANITE COUNTERTOPS

801-467-4439

www.blackgranite.us

Let us bid your home!

UT DOPL#6394834-5501

KITCHENS

BATHROOMS

CUSTOM





Builders FirstSource is the premier supplier of building materials and services.

Let us help you with building your dream home. We offer top-quality products with our extensive selection of cabinets, windows, doors, millwork, lumber, trusses, designer hardware, siding and decking. With Builders FirstSource, you get the quality the pros trust with service you can count on.

Product specialists available for professional showroom consultations by appointment.

16 LOCATIONS SERVING THE SALT LAKE MARKET

- Heber City Lumber | 1690 South Hwy 40 | Heber City, UT 84032
- Layton UT Millwork | 1617 West Hillfield Road | Layton, UT 84041
- Layton UT Yard | 1617 West Hillfield Road | Layton, UT 84041
- Lindon UT Truss | 101 South Geneva Road | Lindon, UT 84042
- Midvale Lumber | 7380 South 700 West | Midvale, UT 84047
- Orem UT Millwork | 117 South 1600 West | Orem, UT 84058
- Orem UT Yard | 117 South 1600 West | Orem, UT 84058
- Park City UT Yard | 1185 West Lori Lane | Kamas, UT 84036
- Salt Lake City UT Millwork | 4711 West 1730 South | Salt Lake City, UT 84104
- Salt Lake City UT Truss | 609 South March Street | Salt Lake City, UT 84104
- Sandy UT Cabinets | 9666 South 500 West | Sandy, UT 84070
- Sandy UT Windows | 9666 South 500 West | Sandy, UT 84070
- Spanish Fork Lumber | 1350 North Main Street | Spanish Fork City, UT 84660
- West Haven UT Yard | 3159 South 1900 West | West Haven, UT 84401
- West Jordan UT Yard | 7902 South 1410 West | West Jordan, UT 84088
- West Valley UT Millwork | 1580 West 3860 South | West Valley, UT 84119

Visit us at **BLDR.com**



ELEVATE YOUR VIEW ELEVATE YOUR HOME

sales@soniqslc.com

soniqslc.com

385-210-0481



BOARD OF DIRECTORS

PARK CITY AREA HOME BUILDERS ASSOCIATION MISSION STATEMENT

The Park City Area Home Builders Association is a nonprofit organization serving the surrounding areas of Summit, Wasatch and Duchesne counties. It is a member-driven, volunteer organization of builders and associates who are leaders in the building industry and who are stalwart in ensuring a better community and a brighter future for the areas in which they live and work.



Jenn Lewis
President
Ghigau Construction



Parker Loomis
First VP
Loomis Construction



Brandon Hicks
Second VP
Magleby Construction



Amanda Trickett
Associate VP
Closet Factory



Danny Moreno
Associate VP
Audio Video Systems



Steve Norr
Secretary
*Peppertree Kitchen
& Bath*



Rob Jibson
Treasurer
Zions Bank



Alicia Ackerman
Executive Officer
PCAHBA



Aaron Blanco
Builder Director
Modern Design + Build



Amy Herold
Builder Director
Hibbs Homes



Joe Witt
Builder Director
Joe Witt Construction



Tami Ostmark
Builder Director
Hamlet Homes



Alan Whetton
Associate Director
*Anvil Appliances/
Anvil Cabinet & Mill*



Ali Roberts
Associate Director
Alison Ann Interiors



Sue Slaugh
Associate Director
Kip Slaugh & Associates



Zach Thompson
Associate Director
Jewkes Design

PAST PRESIDENTS

Paul Montgomery
Montgomery Construction
Management

Pierrette Tierney
American Homes 4 Rent

Max Angle
Live Well Builders

Chris Quinton
Cameo Homes

Doug Jardine
Jardine Construction

Matt Russell
Russell & Co.

Joe Rametta
Rametta & Co.

Preston Campbell
Go West Development

Garrett Strong
Tall Pines Construction

Todd Evans
Blackdog Builders

Jason A. Moore
Plumb Level Square/
PLS Inc.

Jared Rakisits
Mountain Country Homes

Scott Stubbs
Legacy Group
Construction

Dennis Loomis
Loomis Construction

Will Dator
WF Construction

Gary Hill
Midway Construction

Dennis Loomis
Loomis Construction

Will Dator
WF Construction

Gary Hill
Midway Construction

Mike Mercer
Aerie Construction

Rich Williams
Williams Builders

Richard Jaffa
Jaffa Group Design/Build

UTAH HBA REPRESENTATIVES

Brandon Hicks
Magleby Construction

Jenn Lewis
Ghigau Construction

Matt Russell
Russell & Co.

Pierrette Tierney
American Homes 4 Rent

Jen Henry
Kitchen & Bath Distinctions

Sue Slaugh
Kip Slaugh & Associates

NAHB REPRESENTATIVES

Greg White
Interstate Brick



BUILDING LEGACY HOMES FOR YOUR LIFESTYLE

- Voted Park City's Best For The Past Eight Years •
- 2022 First Place Best Custom Home Builder & Best General Contractor •
- 2022 Second Place Best Carpenter & Best Home Remodeler •

435.649.7345 | pjbuilders.com

YOUR HOME HAS A SOUL.
LET'S MANIFEST IT TOGETHER.



It's the little things that make a big difference. Olsen Home Design is a full service interior design firm and retail showroom serving Wasatch and Summit counties.

Stop by and visit during your Showcase tour:

74 W. 200 S. Heber, Utah • (435) 315-3600 • OlsenHomeDesign.com • [@OlsenHomeDesign](https://www.instagram.com/OlsenHomeDesign)

OLSEN HOME

D E S I G N

IT'S GOOD TO BE HOME



VISIT OUR SHOWROOM AT
1678 N STATE STREET OREM

801-224-5550

WWW.HH DU.COM



HEARTHANDHOMEUTAH



FREQUENTLY ASKED QUESTIONS

1

Showcase Guidelines

- Do not enter a Showcase home if you are sick or do not feel safe.
- The Virtual Showcase is available online with your ticket purchase at www.PCShowcaseofHomes.com. Click Virtual Showcase and enter your Virtual Passcode found on your Showcase of Homes ticket to gain access.
- No bare feet. Please bring a clean pair of socks to wear, use the shoe covers provided, and follow the instructions from each builder.
- Be respectful of furniture and surfaces, do not touch anything.
- No food or drink is permitted in the homes at any time.
- Please watch your step.

2

Do you have any tips?

Wear comfortable, easy to remove shoes and clean socks.
Leave unnecessary items and bags in your vehicle.
Use hand sanitation stations at each home.
Take pictures and tag us! #PCShowcaseOfHomes.

3

How much does a ticket cost?

Ticket cost is \$22. Kids aged three (3) and older are required to have a ticket. Purchase at www.PCShowcaseofHomes.com. Please no strollers.

4

How many times can I walk through a home?

Your showcase ticket allows one entry into each of the showcase homes, with an additional 2 re-entries into a home or 2 of your choice. Tickets are good for all 7 days of the Showcase of Homes.

5

How and when can I access the Virtual Showcase?

The Virtual Showcase will be available on our website www.PCShowcaseofHomes.com August 25 - October 6, 2023. You will need to enter the virtual passcode located on your showcase ticket to access the virtual showcase.

6

How can I vote for People's Choice Award?

You can vote for your favorite home on the Showcase of Homes website www.PCShowcaseofHomes.com. Enter your 4-digit voting code found on your showcase ticket to access voting. Voting ends at noon on September 15, 2023.

7

Where can I get the Park City Showcase mobile app and why should I use it?

Search Park City Area Showcase of Homes in your app store to download the mobile app for home details, pictures, turn by turn directions and more.



Architectural Lighting Design | Electrical Engineering | Integrated Dimming Control

- Exceeding Client Expectations for over 40 Years -



www.adaptivedg.com | 435.602.5800



HOME IS FOR SALE FULLY FURNISHED

PRICE
\$3.9 MIL +

TOTAL SQ. FT.
8,038

BEDROOMS
6

BATHROOMS
5 FULL 1 HALF

GARAGE BAYS
6

55 Matterhorn Drive

(SUMMIT PARK) PARK CITY,

SCAN FOR DIRECTIONS



The Hygge house, pronounced (hoo-ga), is a transformation of a 1976 Swiss Alpine style home in the Summit Vista Community of Park City, Utah.

Completely updated and remodeled from top to bottom, the Hygge house gained additional square footage, from a modest 6,000 +-sf home to just over 8,000-sf of interior space distributed amongst 4 levels, with 6 bedrooms and 6 bathrooms. To name a few of the upgrades to expect in this open layout-main floor plan is a high-end kitchen and butler's pantry. The second floor hosts the home office that leads to an 840-sf roof top deck. The master bedroom is an idyllic oasis spanning 830 sf with its own washer/dryer. The basement level can be a totally independent unit if rented out separately from the main home. The Hygge house has every possible amenity one would want to see in a mountain retreat home including a 450-sf gym with dry and wet sauna, a hot and cold plunge, a massage corner, and on the top floor a 448-sf movie room pre-wired with a state-of-the-art AV equipment.

The Hygge house accommodates a large family for full time living or large groups of vacationers who come to Utah to experience the best mountain living in the country. The environment is clean, safe, and quiet, while surrounded with natural beauty from every part of this home. Densely forested, Summit Park is an ideal place to escape the hustle and bustle of city life.

Sitting at 6,886 feet above sea level, surrounded by 21.7 square miles of nationally protected conservation easement, the Hygge house is THE mountain retreat for people who love nature and outdoor activities like snowmobiling and skiing in the winter, and hiking, camping, biking, and boating in the summer. With upwards of 10 miles of trails including 3.5 miles of hiking-only trails, Summit Park has something for everyone.

The Hygge house interiors is a Scandenese or Japandi (Scandinavian-Japanese mix) style adapted for a modern remodeled home in the mountains. Every beautiful permanent fixture of the existing 1976 home was carefully preserved and incorporated into the new interior style. While touring the home visitors should pay extra attention to the exterior flagstone and stained-glass windows, the wood ceilings, which were all revamped, along with the existing brick and wood fireplaces throughout the home. Extra attention was paid to areas where the kept fixtures could be restored to their original charm.

Please read the full story about this home on the Park City Area Showcase of Homes mobile app and website.



BYA PATZNER

BEN KJAR



BERING BY *Bya*

BYA INTERIOR STYLIST

385.226.4029

bya@byapatzner.com

byapatzner.com

PCAHBA MEMBER SUBCONTRACTORS AND SUPPLIERS

Aurora Lighting and Design	Tile For Less
All Metro Tech	Frugl Home Fitness
CopperHAUS	
Tanner Glass & Hardware	
Scandinavian Designs	
Artifacts	



WHERE *imagination*
BECOMES REALITY

Aurora
LIGHTING AND DESIGN

385-403-0223 • auroralightingcompany.com





HOME IS NOT FOR SALE

PRICE	TOTAL SQ. FT.	BEDROOMS	BATHROOMS	GARAGE BAYS
SEE BUILDER	5,123	5	4 FULL 2 HALF	2

3041 Oak Rim Lane

(PARK MEADOWS) PARK CITY

SCAN FOR DIRECTIONS



This 5,100+ square foot, 4+ bed, 6 bath new build in Park Meadows is technically a remodel of a 1980's era split level home. The creative design produced in collaboration with Farrell Architects used the foundation and lot contours to streamline the cost and construction timeline, while creating a true mountain modern masterpiece, right in the middle of Park City.

The home is powered entirely by sunlight, with an extensive rooftop solar array that charges batteries by day that then run the major electrical components – heating and cooling, cooking, lighting, and even charging two electric vehicles simultaneously – in a forward-thinking and efficient manner. The design highlights the rustic history of the area's rugged beginnings with contemporary elements of today's style in a way that is timeless, unique, and beautiful.

Alpine Design Build LLC takes pride in its dedication to service and creating a cohesive project team with a singular vision to turn dreams into reality, whether it is a ground-up new build or reimagining an existing home.



BRAD JOHNSON



ALPINE DESIGN BUILD

425.223.2202

brad@alpinedesignbuildutah.com

alpinedesignbuildutah.com

PCAHBA MEMBER SUBCONTRACTORS AND SUPPLIERS

MLD - Mountain Land Design	Bedrosians Tile and Stone
Farrell Architecture PC	Epic Windows & Doors
Closet Factory	Alpenglow Energy LLC
Builders FirstSource	Snow Top Electric
Tanner Glass & Hardware	Elevated Interiors



ALPINE
DESIGN BUILD

DREAM. DESIGN. BUILD.

alpinedesignbuildutah.com



03



HOME IS FOR SALE

PRICE
\$2.6 MILTOTAL SQ. FT.
5,328BEDROOMS
5BATHROOMS
4 FULL 1 HALFGARAGE BAYS
3

2710 Ledger Way

(PARK CITY HEIGHTS) PARK CITY

SCAN FOR DIRECTIONS



Welcome to this exquisite one-story home with a full, finished basement, featuring five bedrooms and 4½ bathrooms across 5,328 total square feet. The spacious owner's bedroom offers a luxurious bathroom and a large walk-in closet. Enjoy covered outdoor living spaces on both levels and a gourmet kitchen for culinary delights. The main level includes a formal dining room and an office, while the basement boasts an exercise room and a family room with a kitchenette. The tandem 3-car garage with a polished floor adds a touch of elegance. With a modern exterior and impeccable design, this home is a true gem.

"There's no Home Like Ivory"

Utah's Number One Homebuilder® continues to grow and change with Utah! We have five home design categories: Signature, Collection, Gardens, Cottages and Towns. All these homes have been carefully designed using the expertise of some of the country's most celebrated design and construction experts. Ivory Homes currently offers more than 200 floor plans across 70 Utah communities. Our award-winning team operates on the core value that our customers deserve the best homes on the market. We incorporate exceptional features and elements that make a home valuable for your lifestyle today while maintaining value for the changing needs of homeowners in the decades to come!



TROY GOFF



IVORY HOMES
801.747.7000
troyg@ivoryhomes.com
ivoryhomes.com

50

2023 PARK CITY AREA
SHOWCASE of HOMES





There's No Home Like **Ivory**

At Ivory, our award-winning team operates on the core value that our customers deserve the best homes on the market—incorporating exceptional features and elements that make a home valuable for your lifestyle today while maintaining value for the changing needs of decades to come.

That's why for over 35 years, Ivory Homes has been Utah's Number One Homebuilder®, dedicated to building the most exceptional homes in Utah; and with more than 200 floor plans across 70+ communities from Ogden to St. George, you'll surely find the right home for you.

Learn more at [IvoryHomes.com](https://www.IvoryHomes.com)

Follow us @IvoryHomes



All information contained in this ad is deemed reliable but not guaranteed. All properties/materials are subject to prior sale, change or withdrawal notice. Ivory Homes, Utah's Number One Homebuilder® believes all information to be correct but assumes no legal responsibility for accuracy.





HOME IS FOR SALE

PRICE
\$4.9 MIL +TOTAL SQ. FT.
5,468BEDROOMS
4BATHROOMS
5 FULL 1 HALFGARAGE BAYS
3

2737 E. Bitter Brush Drive

(PROMONTORY) PARK CITY

SCAN FOR DIRECTIONS



Modern Mountain Builders has over 30 years of experience in construction, our goal is to make your vision a reality and to build relationships that will last a lifetime. We want to make building your dream home an experience you'll want to do again.

This home is in the beautiful development of Promontory, where you can enjoy the extensive amenities of this exclusive gated community. The natural stone and snow fence siding exterior will stand the test of time and weather. The floor to ceiling stone fireplace in the living room is only second to the amazing glass sliding doors that capture unforgettable views of the Park City landscape. Moving into the center of this gorgeous chef's kitchen is a one of kind metal hood vent. To keep the kitchen looking amazing, you'll find a butler's pantry nestled off to the side. Or use the built in BBQ just outside the spacious dining room which is framed with "salty fir" reclaimed wood beams. The main floor has two primary suites, one of which has a granite wrapped fireplace. Up the floating staircase is another two bedrooms, two bathrooms and a cozy loft.

Off the bar at the base of the stairs you can enjoy a theater quality experience on the 85-inch TV or grab a game of foosball with the kids. Next, maybe hit a few balls on the golf simulator or just relax and watch in the comfortable lounge area.

This home has everything you could possibly need and we look forward to building your dream into reality.



ANDY MAPP

STEPHANIE MAPP



MODERN MOUNTAIN BUILDERS

801.910.6374

andy@modernmountain.build

@modernmountainbuilders

PCAHBA MEMBER SUBCONTRACTORS AND SUPPLIERS

Chariot Plumbing & Design

Habitations Residential Design Group

Jones Mechanical

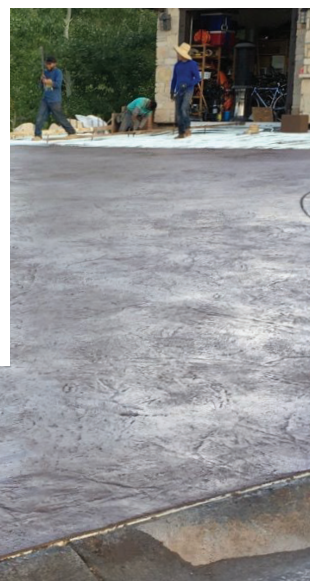
MLD – Mountain Land Design

Sunpro



KIP SLAUGH & ASSOCIATES, INC

Concrete Specialists



Visit Our Website
kipslaughtconcretespecialists.com
 Find us on Instagram and Facebook
 Give us a Call
 (801) 573-3821



HOME IS NOT FOR SALE

PRICE
SEE BUILDER

TOTAL SQ. FT.
9,329

SHOP SQ. FT.
2,266

BEDROOMS
5

BATHROOMS
4 FULL 2 HALF

GARAGE BAYS
4

7486 Bugle Trail

(PROMONTORY) PARK CITY

SCAN FOR DIRECTIONS



Nestled in Park City's majestic landscapes, this luxury custom home offers an unparalleled living experience with breathtaking views of the nearby ski resorts. Designed with architecture that will stand the test of time, this residence blends sophistication with nature, boasting a beautiful open concept that seamlessly merges indoor and outdoor living.

As you step inside, the great gathering spaces unfold, seamlessly blending indoor and outdoor living. The interior showcases the perfect fusion of contemporary design with mid-century accents, offering a harmonious balance between modern comfort and timeless sophistication.

Incredible by Design, Unconventional by Nature.

Ezra Lee Design+Build is an innovative, full-service firm that offers Architecture, Construction, Interior Design, and Furniture + Decor. Every project is approached thoughtfully and collaboratively to deliver a home that reflects the client's lifestyle. The firm's unique design-build process allows Ezra Lee Design+Build to pursue standards of excellence as the company eliminates the disconnect between the homeowner, designer, and builder to create a seamless experience.

**EZRA
LEE
DESIGN
+BUILD**

EZRA LEE DESIGN+BUILD

801.448.6876

info@ezralee.com

ezralee.com

PCAHBA MEMBER SUBCONTRACTORS AND SUPPLIERS

All Metro Tech

Dominion Energy

Ezra Lee Design+Build

Hearth & Home Distributors

Honey Bucket

Masterpiece Trade Services

MLD – Mountain Land Design

Pella Windows & Doors Mountain West

Rocky Mountain Waterproofing

Roth Living

Sunpro



ARCHITECTURE | CONSTRUCTION | INTERIOR DESIGN | FURNITURE + DECOR
ezralee.com

EZRA
LEE
DESIGN
+BUILD





HOME IS FOR SALE

PRICE
\$7.4 MILTOTAL SQ. FT.
7,315BEDROOMS
6BATHROOMS
6 FULL 2 HALFGARAGE BAYS
2

3902 Aspen Camp Loop

(PROMONTORY) PARK CITY

SCAN FOR DIRECTIONS



This modern house features straight lines, reflective surfaces, open floors and spacious rooms. High-quality building materials and technology with luxurious finishes and furnishings. The impressive covered front entry welcomes you to a 7,315 square-foot spacious open floor plan.

Once inside, the high ceilings with scenic statement windows and sliding doors flood the interior with bright natural light and impressive views. Equipped with multiple bedrooms and flexible spaces, the possibilities are endless with this house. It is as beautiful in person as it appears in the images.

Outdoor entertainment areas and peaceful mountain exterior living spaces create the tranquility and quietude for a connection to the outdoors with impeccable views and lasting memories.

Big Canyon Homes is a family-owned business that strives to be actively engaged in the building envelope and building science of homes. This new modern home is a statement to the craftsmanship, science building practices, and quality of our builds. This retreat is energy efficient, has smart home technology, with a fresh air ventilation system to provide healthy, quality living with the tightness of the build that our mountain climate demands. Big Canyon Homes has been building award winning luxury homes for clients for the past 30 years. Many of our projects have been ski in/out in The Colonies, Deer Valley, Park City and Powder Mountain. The integrity of our homes and our experience as a luxury custom home builder provides Big Canyon Homes a pathway to our number one goal of customer satisfaction.

Home designed by Bertoldi Architects. Interior Design by Webster Design.



PAUL BERMAN



BIG CANYON HOMES, INC
435.901.2176
paul@bigcanyonhomesinc.com
bigcanyonhomesinc.com

PARTNERING WITH



PCAHBA MEMBER SUBCONTRACTORS AND SUPPLIERS

Arizona Tile	Hearth & Home Distributors
Bedrosians Tile and Stone	Honey Bucket
Bertoldi Architects	Silver Mountain Glass
Builders FirstSource	Summit County Building Department
Delta Stone Products	Schluter Systems
Dominion Energy	The Stone Collection
Earth Elements	The Closet Butler



BIG CANYON HOMES Foundation



Twenty years ago, Big Canyon Homes joined up with Make-a-Wish Foundation to sponsor a 5-year-old boy with leukemia who wanted to be a cowboy. Since then, helping those in need and giving back to our community has been a big part of Big Canyon Homes.

In 2021 Big Canyon Homes took a step further and started the Big Canyon Homes Foundation. We are thrilled to say every penny donated and raised for the foundation goes to people in need. All administrative costs are covered by Big Canyon Homes. Without support from our community, subcontractors, vendors, and clients, this wouldn't be possible.

For the 20 year anniversary, we are excited to partner with Make-A-Wish Utah again to grant a wish for a child in our community.

SINCE INCEPTION, THE FOUNDATION HAS GIVEN:

- Over forty Scholarships to local high schools and has sponsored other projects within the county
- Over \$100k to Primary Childrens Hospitals
- Over \$100k to our Veterans

**TO DONATE TO THE FOUNDATION
OR ATTEND OUR UPCOMING EVENT**



TO HELP US FUND A WISH



Big Canyon Homes Foundation is a 501(c)(3)



HOME IS NOT FOR SALE

PRICE
\$4 MILTOTAL SQ. FT.
7,089BEDROOMS
5BATHROOMS
5 FULL 2 HALFGARAGE BAYS
3

3731 E Rockport Ridge Road

(PROMONTORY) PARK CITY

SCAN FOR DIRECTIONS



McCormick Construction Company has been building quality custom homes in the Park City area for over 20 Years. We are pleased to present this luxury mountain modern home in the breathtaking neighborhood of Deer Crossing within the highly sought-after development of Promontory Club.

McCormick Construction Company has created a truly exceptional luxury mountain home. From the moment you step inside, you'll be struck by the attention to detail and high-quality finishes. The expansive windows offer stunning views of the surrounding Uinta mountains and Rockport Reservoir. The open floor plan with large sliding doors seamlessly blends indoor and outdoor living spaces, providing the perfect setting for entertaining family and friends. With its luxurious amenities and peaceful mountain setting, this home is the perfect retreat for those seeking a life of tranquility and beauty.



RYAN MCCORMICK



MCCORMICK CONSTRUCTION COMPANY
801.718.8218
ryan@mccormickconstructionco.com
mccormickconstructionco.com

PCAHBA MEMBER SUBCONTRACTORS AND SUPPLIERS

Ferguson Bath, Kitchen & Lighting Gallery
Habitations Residential Design Group
Hearth & Home Distributors
Sunpro
Pella Windows & Doors Mountain West

Strong Rock Pavers



Beautify Your Home

REPLACE CRACKED & CHIPPED CONCRETE
OR ASPHALT TO LONG LASTING PAVERS!



Back-to-School Special

\$500 OFF

Some restrictions may apply.
Call for details. Offer ends 9/30/23

Call Now for FREE Expert Design and Consultation!

435-703-8937

WWW.STRONGROCKPAVERS.COM



HOME IS NOT FOR SALE

TOTAL SQ. FT. **3,272** BEDROOMS **3** BATHROOMS **2 FULL 1 HALF** GARAGE **2**

1983 W. Dotterel Circle

(SAGE HEN) HEBER CITY

SCAN FOR DIRECTIONS



Welcome to Hamlet Homes newest home design — The Luxton.

The Luxton is the epitome of modern in a mountain setting and everything you could desire for in a primary home or vacation get-a-way. Designed specifically for our Sage Hen Community, this thoughtfully designed home considers every detail of luxury, space, and light, with large open spaces. This amazing home features three bedrooms and two and a half bathrooms with the owner's suite and laundry secluded on its own level, a walk-out lower level to take advantage of the nature surrounding this home, and rear balconies that boast the most incredible views of both the Jordanelle Reservoir and the new Mayflower Resort and Ski Lifts.

There is no other community that will compare to our Sage Hen Homes. Sitting perfectly between the Jordanelle Reservoir and the Mayflower Ski Lift in beautiful Wasatch County, Utah, this unique community is what Utah has to offer. Spending summers on the lake and winters on the slopes from access to a private ski lift, and incredible views to both throughout the year. These homes will undoubtedly take your breath away with their modern mountain look and design, thoughtful layout and custom-like selections. The setting is unbelievable and with year-round outdoor activities, proximity to historic Heber City and Park City's famous Main Street, you are surrounded with everything you could need or want. Our newly designed homes are sleek, modern, and convenient. We invite you to be a part of Utah's Most Beautiful Community at Sage Hen.

Tour our beautiful home and grab a frozen treat from our gourmet kitchen and enter to win the "Ultimate Sage Hen Outdoor Package" including Paddleboards and Snow Shoes.



HAMLET OWNERS



HAMLET HOMES

801.736.1959

contactus@hamlethomes.com

hamlethomes.com

Interior Designer: Kingdon Design Studio

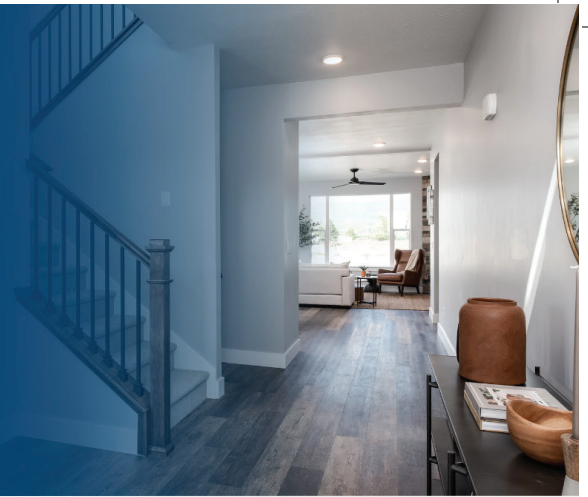
Architecture: J.Cor Architecture, LLC



HAMLET HOMES

GREAT HOMES. GREAT PEOPLE. GREAT EXPERIENCE.

**Concrete construction
in shaky times.**



EXPERIENCE

The Hamlet Difference

www.hamlethomes.com



HAMLET HOMES

GREAT HOMES. GREAT PEOPLE. GREAT EXPERIENCE.

**Building solid foundations
for an ever-changing world.**





HOME IS NOT FOR SALE

PRICE
SEE BUILDER

TOTAL SQ. FT.
4,615

BEDROOMS
4

BATHROOMS
4 FULL 2 HALF

GARAGE
3+

11221 N. Orion Drive

(SKYRIDGE ESTATES) HEBER CITY

SCAN FOR DIRECTIONS



Nestled on a bend of the road within the beautiful SkyRidge Mountain Community, this single-family home enjoys striking views of both Jordanelle Reservoir and Deer Valley Ski Resort. The lot's preserved open space and exterior's mixed materials of stone, wood, and metal seamlessly carry through the home's airy design aesthetic. The indoor neutral, organic pallet, chosen by Michele King of King Design Group, invites the outside in, just as the windows, encompassing all walls, ensures a singular view from any of the four bedrooms. For the recreational enthusiasts or outdoor steward, the home features two covered decks, a grilling station, a private hot tub patio, as well as an extra deep three-car garage. James Carroll and Associates designed the living spaces to display comfort, a fireplace and wet bar on each level for those quiet or social evenings under a roof. Scharpf Construction is proud to build a family home that values quality of life alongside quality of local workmanship.



TONY SCHARPF



SCHARPF CONSTRUCTION

435.300.0123

office@scharpfconstruction.com

scharpfco.com

Interior Design by King Design Group | 435.640.1000 | michele@kingparkcity.com

PCAHBA MEMBER SUBCONTRACTORS AND SUPPLIERS

Builders FirstSource

Ferguson Bath, Kitchen & Lighting Gallery

GearDryer

Hearth & Home Distributors

King Design Group

Midway Painting Company

Park City Blind & Design

RC Ornamental

Rocky Mountain Waterproofing

Silver Mountain Glass

Soniq Windows and Doors

Viotell Metal Concepts

Witt Excavation

JAMES L. CARROLL & ASSOCIATES INC

www.jamescarrollandassociates.com

www.houzz.com/pro/jamescarroll

SALT LAKE CITY 801.359.8517

TOLL FREE 888.889.8517



PROMONTORY CLUB LISTING - KELLY HORN
BERKSHIRE HATHAWAY
HOME SERVICES

CUSTOM HOME DESIGN
ADDITIONS & REMODELS
HOME PLANS



HOME IS FOR SALE

PRICE
PLEASE INQUIRE

TOTAL SQ. FT.
6,810

BEDROOMS
5

BATHROOMS
5 FULL 2 HALF

GARAGE BAYS
3

9406 N Uinta Dr

(TUHAYE) KAMAS

This stunning 5 bedroom 7 bath turn-key estate is perched over the 18th fairway on the Tuhaye/Talisker Club golf course. Inside this cozy, inviting home, you will find that no detail has been missed. From heated floors on both levels, to a world class in home theatre, golf simulator, and gaming room. This home is an entertainers dream with a top of the line wolf chefs kitchen, double island, and a large butlers pantry. Each en-suite comes complete with its own private balcony. With over 6,000 sq ft of private deck and patio space, you will find stunning views of the Deer Valley, Park City ski resorts, and the Uinta mountain range. This movie-in ready luxury home comes complete with a heated driveway, impeccable landscaping, and is fully furnished. Please inquire for further details on sales price.

Serving Lunch 12:00 – 2:00 pm each Showcase day, while supplies last!

SCAN FOR DIRECTIONS



DAVE DIEHL



WES HARWOOD



KEVAN MILLER



HARWOOD HOMES

801.864.1662

david@harwoodhomesllc.com

wes@harwoodhomesllc.com

kmiller@harwoodhomesllc.com

wesharwoodhomes.com



wes_harwood_homes

PCAHBA MEMBER SUBCONTRACTORS AND SUPPLIERS

Cobble Creek Countertops

Epic Windows & Doors

Jewkes Design

NERVE Inc.

Price's Guaranteed Doors

Slayman Design Assoc Inc

Ultimate Home Lending

MYA Assistant

Set The Stage





HOME IS FOR SALE

PRICE
\$6,900,000

TOTAL SQ. FT.
6,771

BEDROOMS
4

BATHROOMS
5 FULL 1 HALF

GARAGE BAYS
3

9014 N. Uinta Drive

(TUHAYE) KAMAS

SCAN FOR DIRECTIONS



This mountain modern custom home is a breathtaking fusion of contemporary design and natural elements, seamlessly blending luxury with the rugged beauty of the Wasatch Mountains. This architectural style embraces the surrounding landscape, maximizing the use of large windows to frame awe-inspiring views of the beautiful Tuhaye Community.

Clean lines, minimalist aesthetics, and a mix of stone, wood, and steel, create a harmonious balance between modern elegance and rustic charm. Inside, open-concept living spaces emphasize spaciousness and allow for easy flow between rooms, while high ceilings add a touch of grandeur.

This modern home is not only a sanctuary that connects residents with nature but also an architectural marvel that showcases the perfect harmony between modern living and the majestic wilderness that surrounds it.



GREG THURGOOD



BLUE RIDGE
BUILDERS

BLUE RIDGE BUILDERS
801.602.0255
greg@blueridge.build
blueridge.build

PCAHBA MEMBER SUBCONTRACTORS AND SUPPLIERS

Duerden's Appliance & Mattress



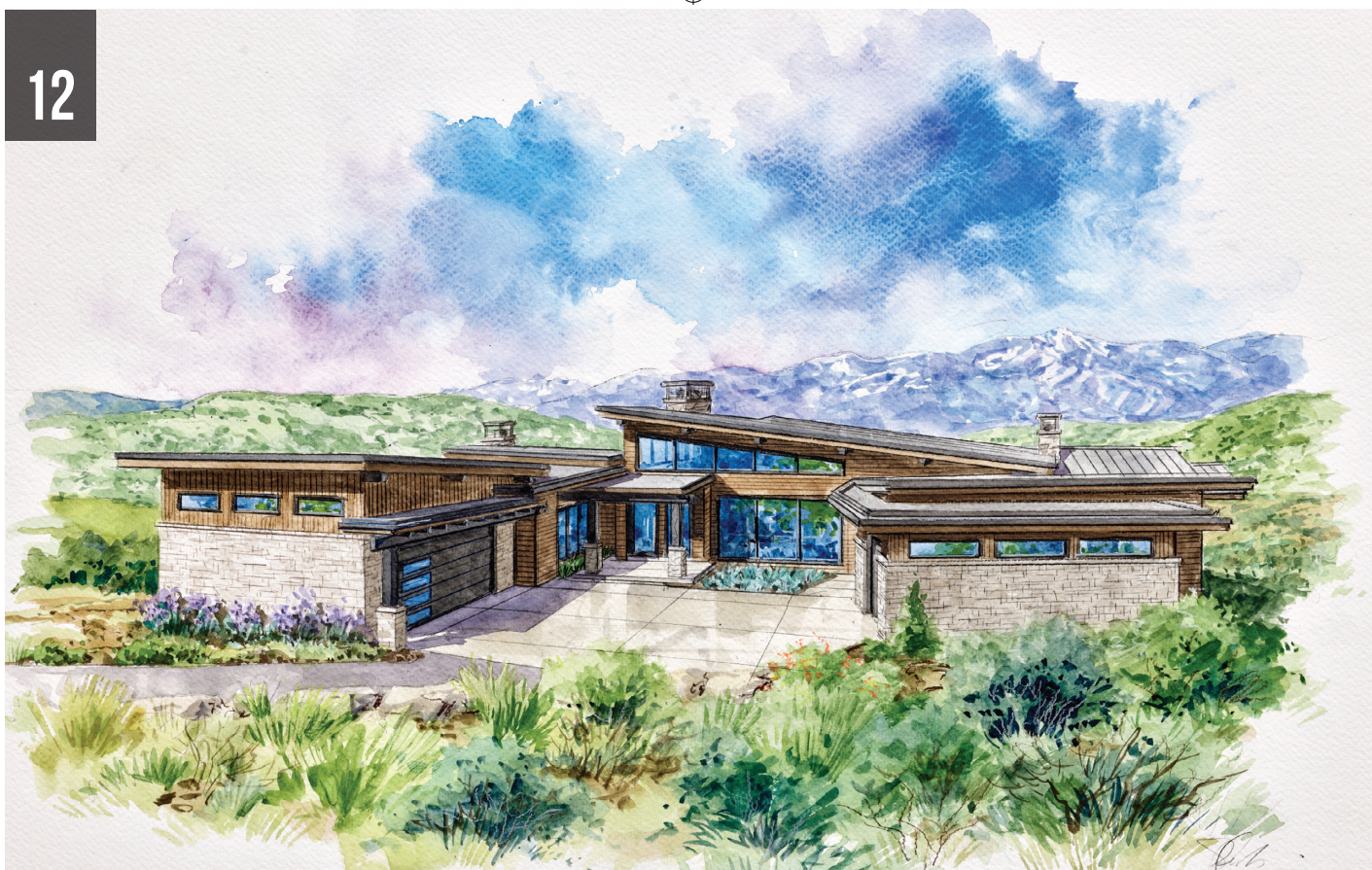
YOUR VISION. OUR PASSION.
ELEVATING CLIENT SATISFACTION
IN EACH BUILD

SHOWCASE DEBUT 2023



BLUE RIDGE
BUILDERS

www.blueridge.build



HOME IS NOT FOR SALE

PRICE
\$8 MIL

TOTAL SQ. FT.
8,900

BEDROOMS
6

BATHROOMS
6 FULL 2 HALF

GARAGE BAYS
3

9809 Ridgeway Circle

(TUHAYE) KAMAS

SCAN FOR DIRECTIONS



At H2 Homes we assist our clients with every aspect of home building, from the conceptual design to the finishing touches. We specialize in building custom homes tailored to the needs and budgets of each individual, focusing on relationships of trust and transparency.

Our process has been tested and proven over years of experience and hundreds of successful builds, and together we can build something that you will be proud to call home.



JOEL HARRIS



LAYNE HARRIS



NATE MAUGHAN



H2 HOMES
801.424.6637
info@h2homes.com
h2homes.com

PCAHBA MEMBER SUBCONTRACTORS AND SUPPLIERS

MLD - Mountain Land Design

BTM Construction LLC

Hearth & Home Distributors

Hansen-All Season Insulation

Honey Bucket

On Top Roofing

Viotell Metal Concepts

Hydroshield

Rocky Mountain Waterproofing

Pella Windows & Doors Mountain West

Olsen Home Design



info@h2homes.com | 801-424-6637





HOME IS NOT FOR SALE

PRICE
\$5 MIL +

TOTAL SQ. FT.
7,053

BEDROOMS
5

BATHROOMS
5 FULL 2 HALF

GARAGE BAYS
3

485 N. Waters Edge Road

(WHITAKER FARM) MIDWAY

SCAN FOR DIRECTIONS



This elegant 7,053 sf family home is complete with a pool, golf simulator, sauna and game room. With a magnificent view of Whitaker Farms Pond and Heber City as the backdrop, this luxury home is given a flare that one might expect to find in the finest of mountain communities.

At Superior Custom Homes a passion for building and construction runs in the family. Growing up witnessing my father own and operate a construction company compelled me to pursue a career in general contracting. My parents always made a great team with my mother being an exceptional interior designer and my father bringing her ideas to life. Superior Custom Homes prides itself on being a top-notch builder with attention to detail that is hard to come by in the industry. At the forefront of the building experience, you can always expect honesty, transparency and communication with Superior Custom Homes. Let us help you create the home you've always dreamed of.



STEPHEN SHERMAN



SUPERIOR CUSTOM HOMES

435.655.5072

ssherman@superiorctr.com

Instagram.com/superior_ctrs

superiorcustomhomesut.com

PCAHBA MEMBER SUBCONTRACTORS AND SUPPLIERS

Home designed by Alexander Design Build

The Hampton Series By AMSCO Windows



Introducing Hampton Series

The most energy efficient windows in the market

WWW.AMSCOWINDOWS.COM





HOME IS NOT FOR SALE

PRICE
\$6 MIL +

TOTAL SQ. FT.
8,032

BEDROOMS
6

BATHROOMS
6 FULL

GARAGE BAYS
8

613 S. Fox Den Road

(MIDWAY CREST) MIDWAY

Overlooking Midway's provincial meadows and farmland, this traditional farmhouse commands a sweeping view of the majestic Wasatch Back and rugged Mt. Timpanogos. By harmoniously blending timeless materials with cutting-edge technology, this home stands as an enduring tribute to the classical Utah homes of yesterday, re-imagined for the 21st century.

Every inch of this breathtaking residence echoes a painstaking attention to detail, transforming it into the embodiment of family living. An abundant amount of detailed millwork adorns the interior, enhancing the home's charm and character. Numerous fireplaces create intimate spaces, their cozy warmth inviting conversation and laughter. A spacious pantry and dedicated craft room cater to the practical aspects of life while offering a haven for culinary and creative pursuits. For movie buffs, a state-of-the-art media room stands ready to screen both revered classics and the latest releases. Golf enthusiasts will enjoy the expansive golf simulator, allowing for year-round practice and play.

The architectural grace of the property extends outdoors, where a range of leisure options await. These include a refreshing pool, a splash pad to beat the summer heat, numerous firepits and restful sitting areas for contemplation or sociable gatherings. Sports lovers will appreciate the private pickleball court and putting green, providing endless hours of entertainment.

One of the property's significant highlights is the detached barn. With a design mindful of the discerning gearhead, it features multiple car bays and a generously proportioned loft - the perfect setting for friendly 'man-cave' gatherings in the years to come.

Named Best of State in Utah for 2023, PureHaven Homes is one of Utah's premier luxury home builders. Our dedicated team has carved out a reputation as innovative problem solvers who take your dreams and make them a reality. We take a collaborative approach to the design-build process and work closely with clients, architects, and designers to ensure the experience of building a home is fulfilling, seamless and fun.

SCAN FOR DIRECTIONS



SHANE HARR

PUREHAVEN | HOMES

PUREHAVEN HOMES

801.870.6559

shane@purehavenhomes.com

purehavenhomes.com

PCAHBA MEMBER SUBCONTRACTORS AND SUPPLIERS

MLD - Mountain Land Design

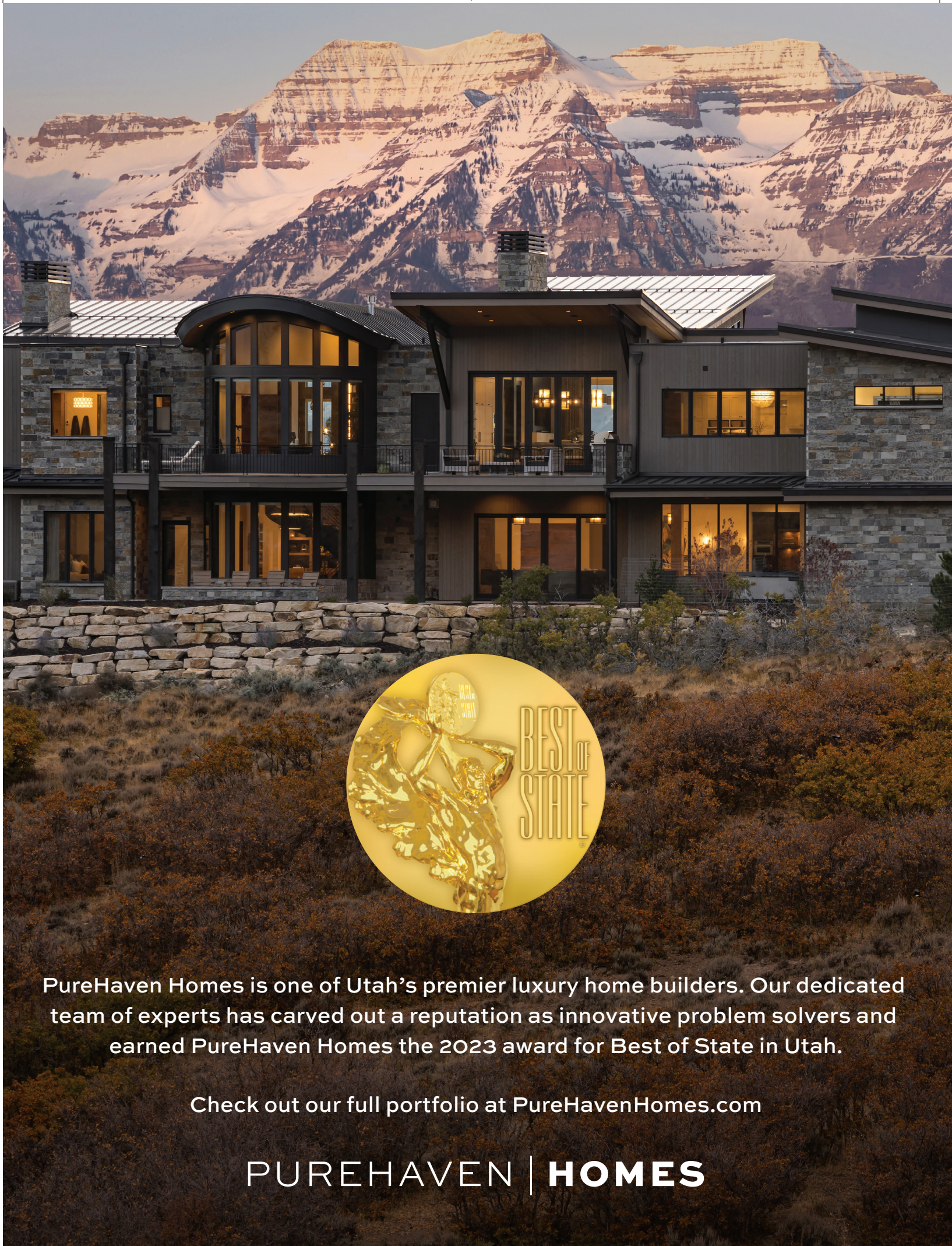
Sunpro

Park City Blind & Design

Rocky Mountain Waterproofing

SCW Footing & Foundations

Sierra Pacific Windows



PureHaven Homes is one of Utah’s premier luxury home builders. Our dedicated team of experts has carved out a reputation as innovative problem solvers and earned PureHaven Homes the 2023 award for Best of State in Utah.

Check out our full portfolio at PureHavenHomes.com

PUREHAVEN | **HOMES**



HOME IS FOR SALE

PRICE
\$4 MIL +

TOTAL SQ. FT.
10,221

BEDROOMS
7

BATHROOMS
6 FULL 2 HALF

GARAGE BAYS
3

360 Old Stone Road

(THE CROSSINGS AT LAKE CREEK) HEBER CITY

SCAN FOR DIRECTIONS



Introducing Stonewood - A mountain Scandinavian home built by Chatwin Homes and designed by Dylan and Delia Chatwin of The Lifestyle Collective. This home aims to fuse a desert and mountain aesthetic that feels organic, fresh and exciting. The use of natural materials and textiles throughout the entire home invoke a sense of warmth and serenity. Stone, wood, plaster, travertine, limestone and porcelain serve as the textured building blocks which constitute virtually every space. The landscaping, mimicking the outdoors with its audible flowing streams and cascades remind us that the most beautiful elements of a home are natural.

Stonewood features 7 bedrooms, 4 of which are en-suite; 8 bathrooms, 2 living rooms, 2 full kitchens, 4 laundry rooms, a theater room and a gym. The spacious deck spans the entire rear of the home overlooking thoughtful landscape features and an abundance of entertaining space. Front and back stone wall courtyards encase built-in firepits for more intimate settings.

Chatwin Homes is honored to build in this beautiful state and has served Utah, Wasatch and Summit counties for over 20 years in creating quality custom homes. Establishing lasting relationships with clients through transparency, as well as commitment to quality in every step of the build is our number one priority.

The Lifestyle Collective is a full-service interior design studio welcoming an appreciation for natural elements, Organic Earth aesthetics and intentionality through design, style and living. Turning to hand-selected textures and vintage pieces they accentuate a space that's mindful and simple, yet impactful in the most natural way.

Stonewood is available for purchase.



DELIA CHATWIN

DYLAN CHATWIN



CHATWIN HOMES
801.494.4993
chatwinhomes@gmail.com
chatwinhomes.com

PCAHBA MEMBER SUBCONTRACTORS AND SUPPLIERS

Builders FirstSource
Rocky Mountain Waterproofing
Soniq Windows and Doors

MAKE ANY SPACE, A ZEN SPACE.

TRANSFORM YOUR BACKYARD INTO A WELLNESS SANCTUARY



 **new primitive.**

LUXURY SAUNA + COLD PLUNGE





HOME IS FOR SALE

PRICE
\$3.5 MILTOTAL SQ. FT.
6,779BEDROOMS
5BATHROOMS
3 FULL 1 HALFGARAGE BAYS
3

3300 Lindsay Spring Circle

(THE CROSSINGS AT LAKE CREEK) HEBER CITY

SCAN FOR DIRECTIONS



Perched high at the back of a cul-de-sac in the picturesque neighborhood of The Crossings at Lake Creek. This new construction home offers an unparalleled blend of elegance, modern comfort, luxurious finishes and the most amazing views of Mt. Timpanogos and the Heber Valley. Views at Lake Creek offers a spacious open floor plan seamlessly connecting the main living areas, creating an inviting and harmonious atmosphere. The gourmet kitchen with its 12ft ceilings is surrounded by custom maple cabinets and an oversized walnut island that seats seven. In the kitchen you'll find high-end Subzero-Wolf appliances including a 48" range top and custom walnut hood, Wolf steam oven and convection oven, 48" Subzero fridge/freezer and two Asko dishwashers that flank the kitchen sink. Just outside the kitchen is the nook that boasts a large all black custom oak table that can seat 10.

Through the large patio slider is the concrete deck that overlooks the Heber Valley and the incredible Wasatch Back. Open the 12'x 9' multi slide pocketing door that creates the most incredible indoor/outdoor living experience. Sit outside on the deck and enjoy the firepit while enjoying the best sunsets the valley has to offer. Cook on the 42" Wolf gourmet grill and enjoy your favorite barbeque foods. With its own private entrance to the deck the primary bedroom boasts 15' ceilings and a gas fireplace providing the perfect place to rest your head. The breathtaking views continue into the primary bathroom with two 8 ft tall corner windows that provide unparalleled natural light and soak up the views like nowhere else in the Heber Valley. At the heart of the bathroom is the soaking tub and the steam shower that provides just the right spot to sit down and sweat your worries away. This shower is controlled by a digital touchpad that controls your temperatures, showerheads and body sprays that can be customized to each user. And to top it off enjoy the natural light in the spacious closet that also includes a stackable washer and dryer. By the kitchen you'll find the "Everything Room". This room is the perfect place to read, play the piano or gets some work done. Over the garage you'll be pleasantly surprised to find a dance studio, a home gym and secluded home office with its own entrance. Downstairs you'll find the oversized 3 car garage with a Costco Elevator. In the basement is a recreation room for casual entertaining with a large space for T.V. and comfortable lounging. Watch T.V. from the adjacent game room while entertaining friends and family with arcade games, air hockey and a wet bar with a beverage fridge and sink. And lastly, lay back and enjoy in the Home Theater that features a 120" screen 7.1 surround sound system and stadium seating while watching your favorite movie or T.V. show.

Thank you for stopping by. We would love to be a part of your dream and build your future home.



TAYLOR HOUSLEY

**THE HOUSLEY GROUP**

801.857.6448

taylor@thehoussleygroup.com

thehoussleygroup.com

PCAHBA MEMBER SUBCONTRACTORS AND SUPPLIERS

Arizona Tile

Roth Living

Sierra Pacific Windows

Sun Mountain Custom Doors

Sunpro

COSTA VIDA SERVING UP CHIPS & QUESO ALONG WITH SWAG & GOODIES!

Aug 26, 12:00 – 2:00 pm

Sept 1, 4:00 – 6:00 pm

Sept 2, 12:00 – 2:00 pm

Enter to win giveaways both weekends from Clean Simple Eats, The Dainty Pear & Minky Couture!



Be cozier at home and save money with **ThermWise®**

Visit **ThermWise.com** to learn more.

Building a new home?

Your builder can apply for rebates and help make your new home energy efficient.

Doing home improvements?

Get rebates for efficient appliances and home weatherization.

Where to begin?

Schedule a Home Energy Plan to learn how to save energy and money now.



**Dominion
Energy®**

ThermWise.com



COMPLETE YOUR *Dream Home* WITH BLINDMAN WINDOW COVERINGS



Whether you are building new or renovating – your home can be a reflection of yourself, your personality, your dream! At The Blindman we understand what you want and are ready to help you with the finishing touches that will make your dream home become reality.



CALL OR TEXT US FOR A FREE IN-HOME CONSULTATION

SERVING THE ENTIRE WASATCH FRONT & ST. GEORGE

Lindon - Factory Showroom - 750 North 2800 West



CALL TEXT 801 692-2490

St. George - Showroom - 314 North 3050 East, Unit C



CALL TEXT 435 652-9947



Love Walking Into Your Home with NOBLE HOUSE



Complimentary Design Services
Financing Available



22 Years Experience
Design Services & Shipping
Available Nationwide

Sofas • Sectionals • Chairs • Dining • Bedroom • Rugs • Artwork • Lighting • Accessories • Seasonal

530 W. 1500 S. Bountiful, UT • noblehousedesign.com • 801-294-4036  



www.peppertreekitchen.com

WEST JORDAN SHOWROOM
7940 S 1300 W
801-565-1654

JACKSON HOLE SHOWROOM
485 W BROADWAY
801-565-1654

OWN ALL OF PARK CITY



TALISKER CLUB

New Property Releases
Homes and Homesites
from the \$900Ks - \$5M

As the *only* four-club/one-membership private home community in Park City, Talisker Club gives you exclusive access to an unmatched collection of mountain, country club, Main Street and backcountry destinations. Up here, your family legacy is more than a home. It's a land of wonder-filled memories.

The Talisker Clubs:

EMPIRE PASS | MAIN STREET | OUTPOST | TUHAYE

Welcome Center Open Daily | Call **435.333.3617** for your private tour, or visit **TaliskerClub.com**

**BERKSHIRE
HATHAWAY**
HOMESERVICES
UTAH PROPERTIES

©2023 BHH Affiliates, LLC. An independently owned and operated franchisee of BHH Affiliates, LLC. Berkshire Hathaway HomeServices and the Berkshire Hathaway HomeServices symbol are registered service marks of Columbia Insurance Company, a Berkshire Hathaway affiliate. Equal Housing Opportunity. Information not verified or guaranteed.

The Talisker Club materials and the features, prices and planned amenities are based upon current development plans which are subject to change without notice. Any and all recreational and golf amenities and facilities will be privately owned and operated as a club with mandatory membership and mandatory membership fees payable. This does not constitute an offer to sell or solicitation of an offer to buy real estate in any jurisdiction where prohibited by law or in any jurisdiction where registration or other legal requirements have not been fulfilled. ©2023 The names and logos are licensed and registered trademarks of Storied Deer Valley, LLC. 🏡

SOME CALL IT “FLYOVER.”
WE {*blissfully*} CALL IT HOME.



Night skies are darker
in the mountains of the West.
Our star-kissed towns and the
surrounding pristine environ-
ments inspire us. And our homes
connect us with our families,
our communities, and nature.

Behind all great mountain
homes are compelling stories.
As the go-to source for the best
in architecture, construction,
and design, *Western Home Journal*
loves to tell them, but shh...
let others continue to fly over.

INSPIRING LOCATIONS | ELEVATED SPACES

BEND | BOZEMAN/BIG SKY
FLATHEAD VALLEY | JACKSON HOLE
PARK CITY | SUN VALLEY

WESTERNHOMEJOURNAL.COM





MARCELLA

With unlimited
skiing and amenities,
members will experience
the peak of slopeside
luxury in America's
newest ski resort.



marcellaclub.com

A Portrait shows your Children...
they are part of something *Bigger*.



Impact
Photography



Scan for
complimentary
portrait session and
20% off your portrait
purchase up to \$500



Todd has an amazing
collection of high definition wall
decor that can be custom printed
to fit your space



Art &
Decor
code



75 South Main • Heber City, Utah 435-654-2726 IMPACTdesignerPORTRAITS.com



Custom Timber Frame Pergolas, Pavilions, Gazebos and more

SPECIAL FALL PRICING

*Sale pricing for a limited time. Discounts on freestanding structures only.

Use code: FALLING4PC
(to get 50% OFF installation)



801.410.4255

notched.com

GARAGE FLOORS | BASEMENTS | PATIOS | WALKWAYS | CABINETS | SLAT WALLS | COMMERCIAL | CONCRETE POLISHING

Increase the Value of Your Garage!

\$1 OFF

per sq. ft.

Up to \$1,000. May not be combined with
other offers. Expires 11/30/23.



Get your **FREE** quote today!
ELEVATED-COATINGS.COM



OGDEN | 801-829-7485 • SALT LAKE CITY | 801-477-8209 • UTAH COUNTY | 801-436-7931

**BUDGET
BLINDS®**

Style and service for every budget.®

**SPRINGS
WINDOW
FASHIONS**
the Best Experience
Company



**WE DO IT ALL FOR YOU:
BLINDS • SHADES • SHUTTERS • DRAPES
HOME AUTOMATION**

© 2023 Budget Blinds, LLC. All Rights Reserved. Budget Blinds
is a trademark of Budget Blinds, LLC and a Home Franchise Concepts Brand.
Each franchise independently owned and operated.



Smart shades that set the vibe.

The vibe is cozy for reading.
Lively on family night. Inviting
for company. And intimate on
date night. Smart shades do the
work for you, making it easier to
create the right ambiance. Plus,
they save on energy bills too.

Call **435.417.6680** for a
free in-home consultation.
budgetblinds.com/wasatchback



**TO THE MOUNTAINS
FROM THE COAST...**

**AN EVOLUTION OF
DESIGN/BUILD EXPERIENCE**



Steve Lazar
(435) 659-6521

steve@luxemodernmountainhomes.com





IT'S TIME FOR **NEW** BLINDS OR SHUTTERS!!

Lifetime warranty
on all products!



Shutters

Many **FREE**
upgrades
NO SALES TAX



Cell Shades

FREE Cordless
Topdown/Bottom up



Travis Thompson
435.841.0408

Dan Shepherd

Make a Blind Date with us!



2.5" Faux Wood

#1 in
child safety
Best Price Guaranteed...



Rollershades

20% OFF
Motorization
100's of fabrics to choose from



Outdoor Patio/Deck Shades
20% OFF Motorization

30 Years
Covering Utah
Windows

FREE
IN HOME
ESTIMATES

Ask about our contractor
pricing on 10 or more windows
Save \$100's

801.243.4464
Blindmastersutah.com

WE WILL BEAT ANYBODYS PRICE, EVEN THE BIG BOX STORES!

Showcasing our Investment Rates.

INVESTMENT CERTIFICATE RATES

1 year • 5.50%

3 years • 6.25%

5 years • 6.75%

\$10,000
minimum

\$800,000
maximum

**NEW
LOCATION**



Call Ashley or visit us online today! (By appointment only)
801-566-5559 • WasatchCredit.com
7324 Union Park Ave., Suite #100, Midvale 84047
Mon-Thur 9:30-4:00
For Utah Residents Only

STEWART RANCHES

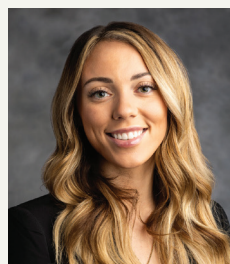


Ivory Homes® is excited to bring their Signature Series of semi-custom one and two-story home designs to the majestic Kamas Valley in Francis, Utah. Stewart Ranches is minutes from Utah's unrivaled outdoor recreation opportunities including skiing, golfing, fly fishing, snowmobiling, four-wheeling, hiking, biking, and more. Conveniently located 15-20 minutes from two of our amazing Utah lakes—Jordanelle and Rockport where boating and other fun lake activities take place. Stewart Ranches is only 30 minutes from Main Street Park City and just under an hour from Salt Lake City International Airport.

LEARN MORE ABOUT STEWART RANCHES, YOUR GATEWAY TO THE UINTAS



ALEX LACOUTURE
970.405.4749
alex.lacouture@sothebysrealty.com



CAMILLA DIXON
801.834.4755
camilla.dixon@sothebysrealty.com



Summit

Sotheby's
INTERNATIONAL REALTY



Sotheby's International Realty® is a licensed trademark to Sotheby's International Realty Affiliates, Inc. An Equal Opportunity Company. Each Office Is Independently Owned And Operated.

Utah Business *FORWARD* >>



Join us at Utah Business Forward, the premier conference designed exclusively for executives seeking practical insights and actionable strategies to propel their businesses forward. Experts from Utah's business community will present in five distinct tracks covering Entrepreneurship, International Business, Marketing, People & Culture, and Strategy. These highly practical sessions include guides and checklists you can execute as soon as you return to the office!

FEATURING:

- Brandon Fugal
- Michelda George
- Nate Randle
- Shawn Nelson
- Sunny Washington
- Wendy Steinle
- and many more!



EARLY BIRD REGISTRATION \$299

(ENDS AUGUST 31) | [FORWARD.UTAHBUSINESS.COM](https://forward.utahbusiness.com)



**Huetter Molding,
Stair Parts, and Installation**
FOR REMODEL AND NEW HOME CONSTRUCTION

SHOWROOM
4730 South 500 West
Murray, Utah 84123
www.huetermill.com
801-266-3222